



North STL County Community Connector

Several potential alternatives for extending light rail from north St. Louis City (possibly along Natural Bridge Avenue) to the North County Transit Center along I-270 and other locations are currently being studied. Called the North STL County Community Connector, this project includes studying the costs and estimating ridership for each alternative plus determining potential station locations. The goal is to select the best option that meets community needs.



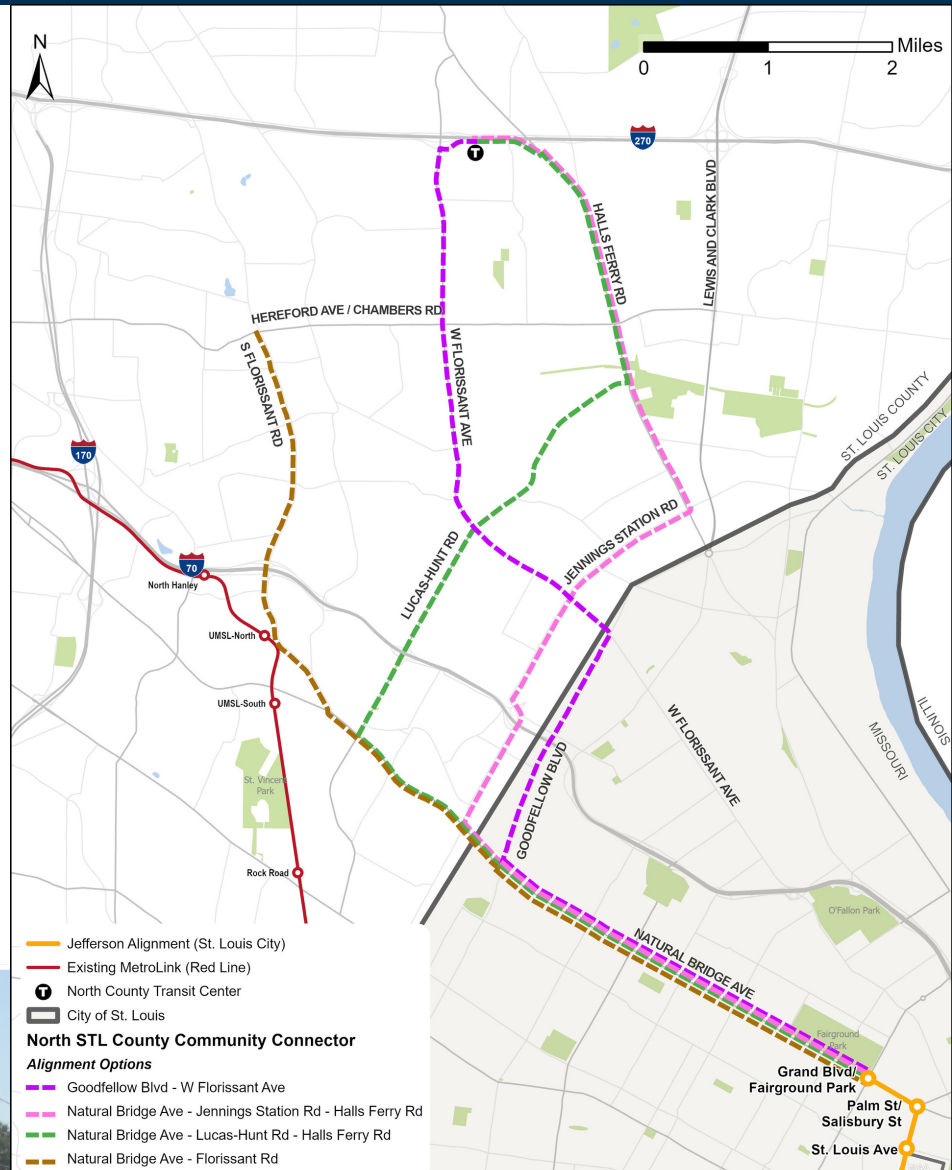
Project Goals

- Provide more choice to people with limited transportation options
- Invest in historically underserved neighborhoods



Alignment will feature modern in-street light rail technology:

- Minimizes impacts to adjacent properties
- Operates in dedicated lane, separated by curb to enhance safety and travel times
- Enhances pedestrian experience with level station boarding



Learn More at GrowingMetroLink.com





North STL County Community Connector

Several potential alternatives for extending light rail from north St. Louis City (possibly along Natural Bridge Avenue) to the North County Transit Center along I-270 and other locations are currently being studied. Called the North STL County Community Connector, this project includes studying the costs and estimating ridership for each alternative plus determining potential station locations. The goal is to select the best option that meets community needs.



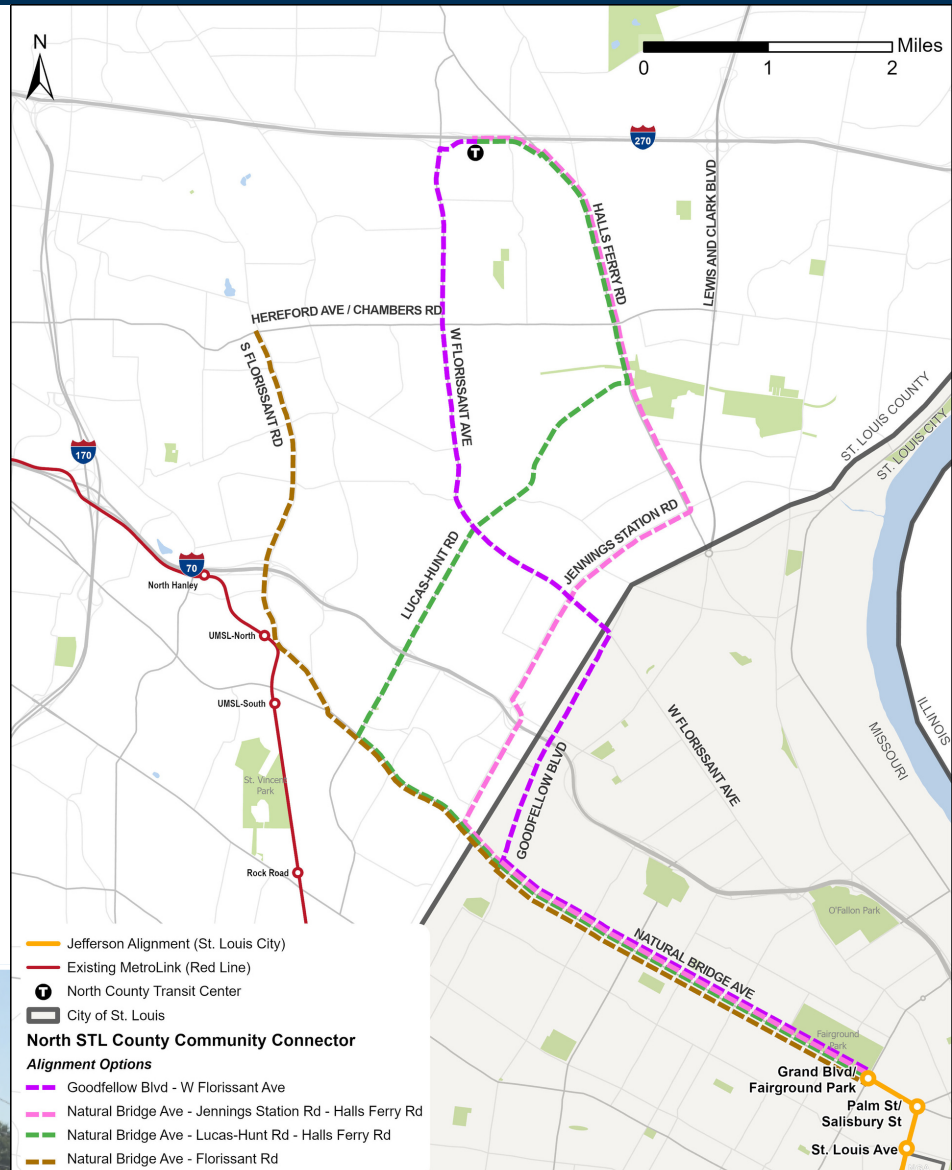
Project Goals

- Provide more choice to people with limited transportation options
- Invest in historically underserved neighborhoods



Alignment will feature modern in-street light rail technology:

- Minimizes impacts to adjacent properties
- Operates in dedicated lane, separated by curb to enhance safety and travel times
- Enhances pedestrian experience with level station boarding



Learn More at GrowingMetroLink.com





Which alignment will be chosen?

One alignment option, or a combination, will be chosen as the preferred alignment and proposed for construction. There are several factors that go into proposing and then choosing an alignment.

Technical factors that guided development of the four alignment options:

- Equity & demographic factors
- Existing bus ridership
- Light rail compatible streets
- Transfer options with existing transit systems

Factors that will help choose preferred alignment:

- Public feedback
- Light rail design requirements
- Rough cost estimates
- Future ridership forecasts
- Coordination with other, ongoing area projects



Timeline



Public engagement through spring of 2023 with feedback on alignments, station locations, and integration with existing transit system.



Technical analysis of the alignment options through the summer of 2023.



15% Design of extension: analyzing potential designs, current and future ridership, and costs.

(typically takes 12-18 months)

After the initial design, similar projects typically take 2 years for project development, then 3 years for engineering, and 2 years for construction.



Want to stay involved in this planning process? Stay up-to-date on the next phases of this project and more opportunities to share your feedback via the GrowingMetroLink website!



Learn More at [GrowingMetroLink.com](https://growingmetrolink.com)